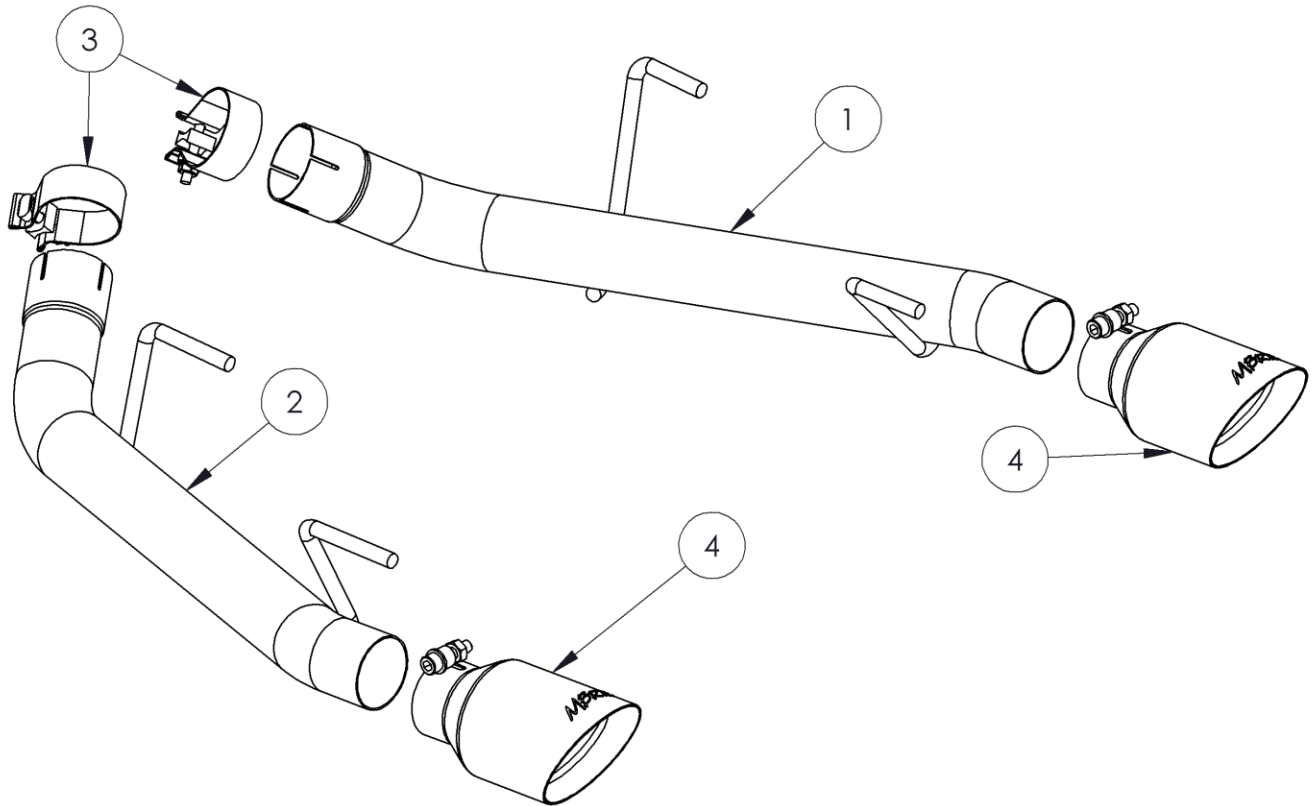


S7202

05-10 FORD MUSTANG GT
(4.6L)/GT500 (5.4L), AXLE
BACK KIT, DUAL SPLIT REAR

MBRP



1. PASSENGER-SIDE MUFFLER REPLACEMENT PIPE
2. DRIVER-SIDE MUFFLER REPLACEMENT PIPE
3. 2 1/2" BAND CLAMP (2 PCS)
4. EXHAUST TIP (2 PCS)

PLEASE READ BEFORE STARTING INSTALLATION

While MBRP Inc. has made every effort to ensure that all components of this system are of superior quality and properly packaged, it is the installer's responsibility to ensure the following before removal of the factory exhaust:

- that ALL components shown above are present.
- that ALL mating components fit together.
- that there are no damaged components.
- that the system you have purchased is appropriate for your vehicle year, model and configuration.
- that the system will not interfere with any modifications previously installed or planned.
- that you have read and understand these instructions.

If you have any questions or are uncertain about any aspect of the installation of this system to your vehicle please contact your dealer before commencing installation.

MBRP

Removal of stock system:

1. Apply a penetrating lubricant liberally to all exhaust fasteners, hangers and rubber insulators.
2. Loosen the band clamp located just behind the mufflers on both the driver and passenger sides.
3. Remove the bolts retaining the rubber insulators and remove the muffler assemblies from the vehicle. Remove the insulators from the mufflers. Do not discard the bolts or the insulators as they are required for the installation.

Installation of MBRP Inc. Performance Exhaust:

1. Slide the insulators over the muffler hangers so that when the mufflers are installed the insulators will be positioned beside the frame rails.
2. Slide a **2.5" Band Clamp** over the **Driver-Side Muffler Replacement Pipe**. Now slip the **Driver-Side Muffler Replacement Pipe** onto the factory exhaust pipe.
3. Move the **Driver-Side Muffler Replacement Pipe** into place and attach the rubber insulators using the bolts previously removed.
4. Slide a **2.5" Band Clamp** over the **Passenger-Side Muffler Replacement Pipe**. Now slip the **Passenger-Side Muffler Replacement Pipe** onto the factory exhaust pipe.
5. Move the **Passenger-Side Muffler Delete Pipe** into place and attach the rubber insulators using the bolts previously removed.
6. Install the **Exhaust Tips** onto the **Passenger-Side Muffler Replacement Pipe** and **Driver-Side Muffler Replacement Pipe**.
7. Align the exhaust as required before tightening Clamps. Due to variance in the factory H-pipe location it may be Necessary to loosen the two clamps located in front of the factory H-pipe to achieve a good alignment.
8. Tighten all hardware, tips and clamps, starting at the front and working rearward to secure the system. Check along the full length of the exhaust system to ensure there is adequate clearance for fuel lines, brake lines, frame, bodywork, suspension and any wiring, etc. If there is any interference detected, relocate or adjust to provide adequate clearance.

Congratulations! You are ready to begin enjoying the improved performance and driving experience of your MBRP Inc. performance exhaust system. We hope you enjoy your purchase.